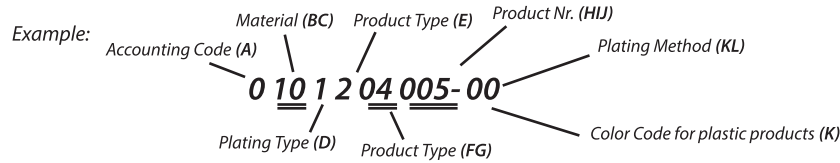


## The explanations of the digits are shown below

### KEY PRODUCT CODES

The products codes are expressed by a 10-digit number as shown in the example below. The explanations of the digits are shown below.



### EXPLANATIONS

**A- Accounting Department Code:** Code for our accounting department.

#### BC- Material:

- 10- Brass (CuZn30)
- 11- Brass (CuZn36)
- 12- Brass (CuZn37)
- 20- Copper (E-Cu)
- 21- CuNiSi
- 22- CuFe
- 25- German Silver (CuNiZn)
- 30- Phospor Bronze (CuSn6)
- 31- Phospor Bronze (CuSn4)
- 32- Phospor Bronze+Stainless Steel (CuSn4+X10CrNi)
- 33- Phospor Bronze+Stainless Steel (CuSn6+X10CrNi)
- 34- CuSn0,1
- 41- Stainless Steel (X5CrNi)
- 50- DC
- 70- Plastic (PA6.6)-Flammability Class V2
- 72- Plastik (PVC)
- 73- Plastik (PE-I 20)
- 78- Plastic (PA6)-Flammability Class V2 V2-NF
- 79- PBT
- 83- PA6.6 (GF) %20
- 84- PA6.6 (GF) %13
- 90- PA6.6 (GF) %50
- 93- PPS (GF) %65

#### FG- Product Type:

- 01- Faston Type Tabs
- 02- Tubular Type Plug Terminals
- 03- Special Faston Tabs
- 04- Faston Type Terminals
- 05- Tubular Type Sockets
- 06- Special Type Terminals
- 07- Ring Terminal
- 08- Spade Tongue Terminal
- 09- Ring Tongue Terminal
- 10- End Splices
- 11- Splices with Insulation Barrel
- 12- Hat-Mate
- 40- Terminal Housing (Male)
- 41- Terminal Housing (Female)
- 42- Terminal Sleeves
- 43- Sleeved Faston Tabs
- 44- PCB Connector
- 80- Other Product

#### D- Plating Type:

- 0-Unplated
- 1- Tin Plated Bright
- 2- Nickel Plated
- 3- Silver Plated
- 4- Copper+Nickel Plated
- 5- Copper Plated
- 6- Tin Plated Matte
- 7- Other
- 8- Nickel+Tin Plated Bright
- 9- Nickel+Tin Plated Matte

#### KL- Plating Method:

- 00- Pre-Tin

#### K- Color Code (For Plastics)

- 0- Natural
- 1- White
- 2- Black
- 3- Red
- 4- Yellow
- 5- Green
- 6- Blue
- 7- Grey
- 8- Brown
- 9- Purple
- 10- Orange
- 11- Copper Tone

#### E- Product Type:

- 1- Reel
- 2- Single
- 3- Semi-finished Product
- 4- Reverse Winding

#### HIJ Product Number:

- 001
- 002
- 003
- ....
- ....

### KEY TO TERMINAL DESCRIPTION

Terminals are described as shown in the example below. The explanations of the digits are shown below.

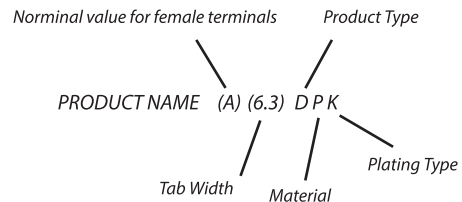
Example: For 6.3 Faston type receptacles:

#### Explanations:

(A) - Nominal value for female terminals

NOMINAL VALUE FOR FEMALE TERMINALS			
CODE	NOM.	MALE	FEMALE
(A)	0.50	0.50	0.40
(B)	0.80	0.80	0.70
(C)	0.55	0.80	0.55
(D)	0.30	0.40	0.30
(E)	0.60	0.80	0.60
(F)	0.70	0.80	0.70
(G)	0.75	0.85	0.75
(H)	0.65	0.80	0.65
(S)	0.80	0.85	0.80
(N)	0.25	0.50	0.25
(P)	0.50	0.50	0.50
(J)	0.90	1.0	0.90

(6.3) - The value in paranthesis is; Tab width for faston terminals (mm)  
Nominal value for faston type receptacles (mm)

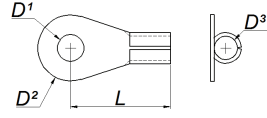


**D- Product Type:** D-Single R-Reel Y-Semi-finished Product

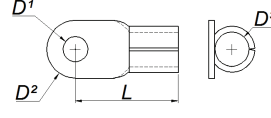
**P- Material:** P-Brass B-Copper M-Stainless-finished Product  
F- Phosphor Bronze C-DC A-German Silver D-CuFe

**K- Plating Type:** K- Tin Plated N-Nickel Plated  
G-Silver Plated Z-Zinc Plated B-Copper Plated

## Ring Tongue Terminals



Form A



Form B



Ürün Adı Product Name	Ürün Kodu Product Code	Malzeme Kalınlığı (mm) Material Thickness (mm)	Kablo Kesiti (mm <sup>2</sup> ) Wire Size (mm <sup>2</sup> )	Form	D <sup>1</sup> (mm)	D <sup>2</sup> (mm)	D <sup>3</sup> (mm)	L (mm)	Malzeme / Material		Adet / SPQ Dökme / Loose
									E-Cu	CuZn	
BK2,5-03	0XXXX09023	0,40	1,00-2,50	A	Ø3,20	Ø8,00	Ø2,30	12,00	*	●	20.000
BK2,5-04	0XXXX09001	0,40	1,00-2,50	A	Ø4,20	Ø8,00	Ø2,30	12,00	*	●	20.000
BK6-06	0XXXX09008	0,70	2,50-4,00	A	Ø6,40	Ø13,10	Ø3,10	19,00	●	*	1.000
BK4-04	0XXXX09007	0,50	2,50-6,00	A	Ø4,20	Ø10,30	Ø3,80	15,50	-	●	10.000
BK4-05	0XXXX09002	0,50	2,50-6,00	A	Ø5,20	Ø10,30	Ø3,80	15,50	-	●	10.000
BK4-06	0XXXX09003	0,50	2,50-6,00	A	Ø6,40	Ø10,30	Ø3,80	15,50	-	●	10.000
BK6-5	0XXXX09024	1,00	2,50-6,00	A	Ø5,20	Ø11,40	Ø4,00	16,00	●	*	500
BK6-6	0XXXX09011	1,00	2,50-6,00	A	Ø6,40	Ø11,40	Ø4,00	16,00	●	*	500
BK8-6	0XXXX09012	1,00	2,50-6,00	A	Ø8,30	Ø14,20	Ø4,00	19,00	●	*	500
BK8-10	0XXXX09013	1,00	6,00-10,0	A	Ø8,40	Ø18,00	Ø5,10	21,00	●	*	500
BK10-10	0XXXX09015	1,00	6,00-10,0	A	Ø10,40	Ø18,20	Ø5,00	21,00	●	*	1.000
BK10	0XXXX09014	1,00	6,00-10,0	A	Ø8,40	Ø16,20	Ø5,00	26,00	●	*	100
BK16	0XXXX09022	1,00	10,0-16,0	A	Ø8,40	Ø17,70	Ø5,80	29,00	●	*	100
BK25	0XXXX09016	1,00	16,0-25,0	A	Ø8,40	Ø21,70	Ø7,40	32,00	●	*	100
BK6-35	0XXXX09004	1,50	25,0-35,0	B	Ø6,50	Ø15,20	Ø9,00	26,50	●	*	500
BK8-35	0XXXX09005	1,50	25,0-35,0	A	Ø8,40	Ø16,20	Ø9,00	26,00	●	●	500
BK35	0XXXX09017	1,40	25,0-35,0	A	Ø10,20	Ø23,00	Ø8,20	35,50	●	*	50
BK10-35	0XXXX09006	1,50	25,0-35,0	A	Ø10,50	Ø18,30	Ø9,00	27,50	●	●	500
BK10-50	0XXXX09021	1,50	35,0-50,0	B	Ø10,45	19,90	Ø9,80	38,70	●	*	500
BK50	0XXXX09020	1,90	35,0-50,0	A	Ø10,40	Ø27,00	Ø10,20	44,00	●	*	25
BK70	0XXXX09018	1,90	50,0-70,0	A	Ø10,30	Ø31,50	Ø13,50	51,00	●	*	25

- Standard Part
- \* Available on request

Kaplama / Plating		
Sn	Ni	Ag
✓	✓	✓