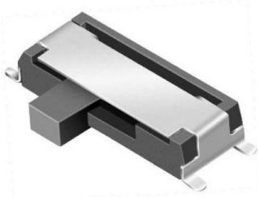


Slide Switch

Q-2503

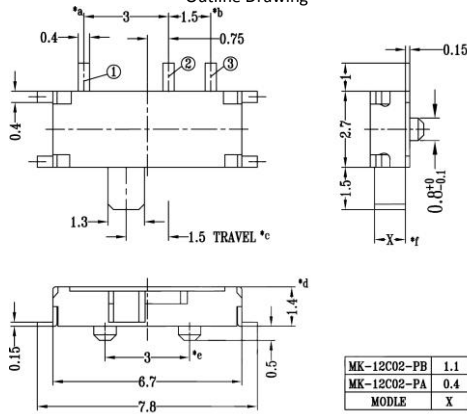
TYPE: **MK12C02**

SPECIFICATIONS

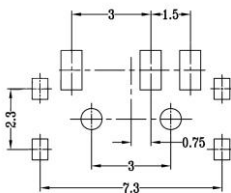


Contact Type	SPDT
Pin Width	1mm/ 5/128"
Rating	DC 50V, 0.3A
Contacts Resistance	30Ω
Insulation Resistance	100Ω
Minimum Load	DC 500V
Dielectric Strengths	AC 500V / 1 minute
Life Test	10 000 cycles/ minute
Material	Plastic & Metal
Weight	1g

Outline Drawing



Mounting



Circuitry

