



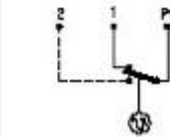
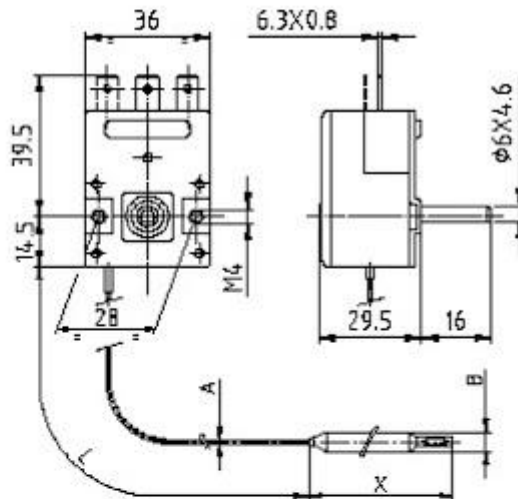
# TR/86

## ADJUSTABLE THERMOSTAT



### NOTE

Terminal: P1 common  
 1 NC  
 2 NO  
 optional  
 Capillary: L from 400 to 3000  
 Sleeve (optional)  
 L min. = 50  
 L max. = L cap. - 100  
 Shaft: standard 16 or 23±1



### TR/86

RANGE °C	TOLL.	Δ T	T AMB	* < MIN	* < MAX	CAP. (A)	BULB (B)	APPLICATIONS
-35+ +35	±2	2±1	55	0	270	φ1.3 Cu	φ6x113 Cu	Refrigeration
0+40	±2	2±1	55	0	270	φ1.3 Cu	φ6x113 Cu	Air conditioning/Heating
0+60	±3	4±2	80	0	270	φ1.3 Cu	φ6x113 Cu	Heat pumps
20+80	±3	4±2	80	90	288	φ1.3 Cu	φ6.5x67 Cu	Water heaters
30+90	±3	4±2	80	90	288	φ1.3 Cu	φ6.5x67 Cu	Heating
30+120	±3	4±2	80	90	315	φ1.3 Cu	φ6x104 Cu	Hydrocleaners/Coffee machines
30+150	±4	5±2.5	80	90	270	φ1.3 Cu	φ6.5x96 Cu	Hydrocleaners
40+220	±6	6±3	150	90	315	φ1.3 Cu	φ6.5x66 Cu	Fryers
50+300	±10	6±4	150	90	315	φ0.9 Inox	φ3x191 Inox	Cooking