

SPECIFICATION

Customer : AUX

Applied To :

Product Name : Receiver

Model Name : KP1106RT2

Drawing No. : KFC3811

Signature of Appronal

[illegible]

Signature of KEPO

Approved by	Checkde by	Issued by	Date



Ningbo Kepo Electronics Co.,Ltd.

Address: No.25 Baoyuan Road Dongqian Lake Industrial Area, Dongqian Lake Ningbo 315121, China

Tel: +86(574)88371186, 88370330 Fax: +86(574)88370329

<http://www.chinaacoustic.com> E-mail: sales@kepo.com.cn

Specification for Receiver		Page	2/9
Model No. : KP1106RT2		Revision No.	1.0
		Drawing No.	KFC3811
<div>CONTENTS</div> <div> 1. Scope 2. General 3. Electrical and Acoustic Characteristics. 4. Reliability Test 5. Measurement Block Diagram & Response curve 6. Structure 7. Dimensions 8. Packing 9. Revision </div>			

Specification for Receiver		Page	3/9
Model No. : KP1106RT2		Revision No.	1.0
		Drawing No.	KFC3811

1. Scope

This specification is applied to the dynamic speaker which is used all of the electrical acoustic product.

- compact, rich sound
- applications: mobile phone, PDA, notebook computer, etc. ...

2. General

2.1 Out-Diameter

:

11x6 mm

2.2 Height

:

2.3 mm

2.3 Weight

:

0.5 g

2.4 Operating Temperature range:

-20~+70℃ without loss of function

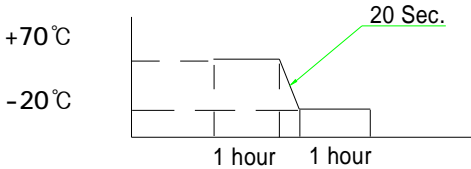
2.5 Store Temperature range:

-40~+85℃ without loss of function

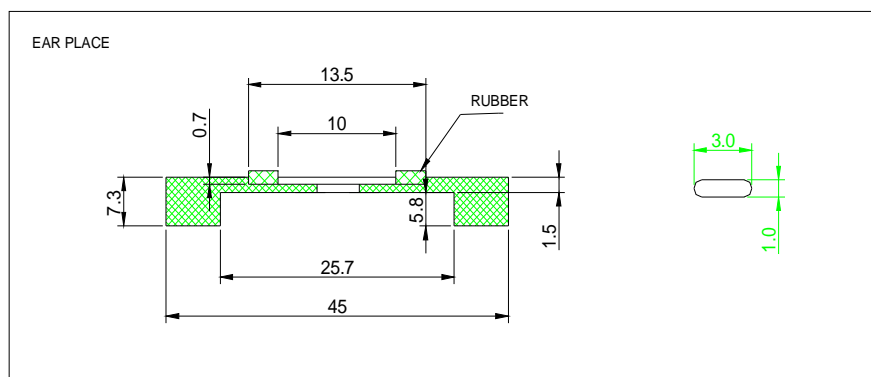
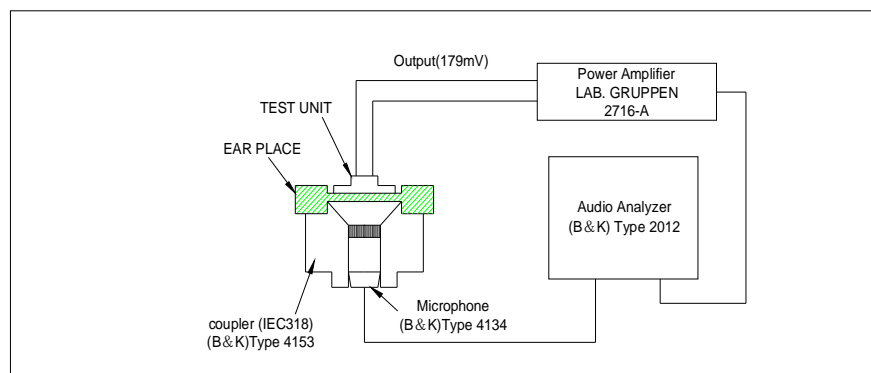
3. Electrical and Acoustic Characteristics.

Test condition : 15 ~ 35 ℃, 25% ~ 85% RH, 860~1060 mbar

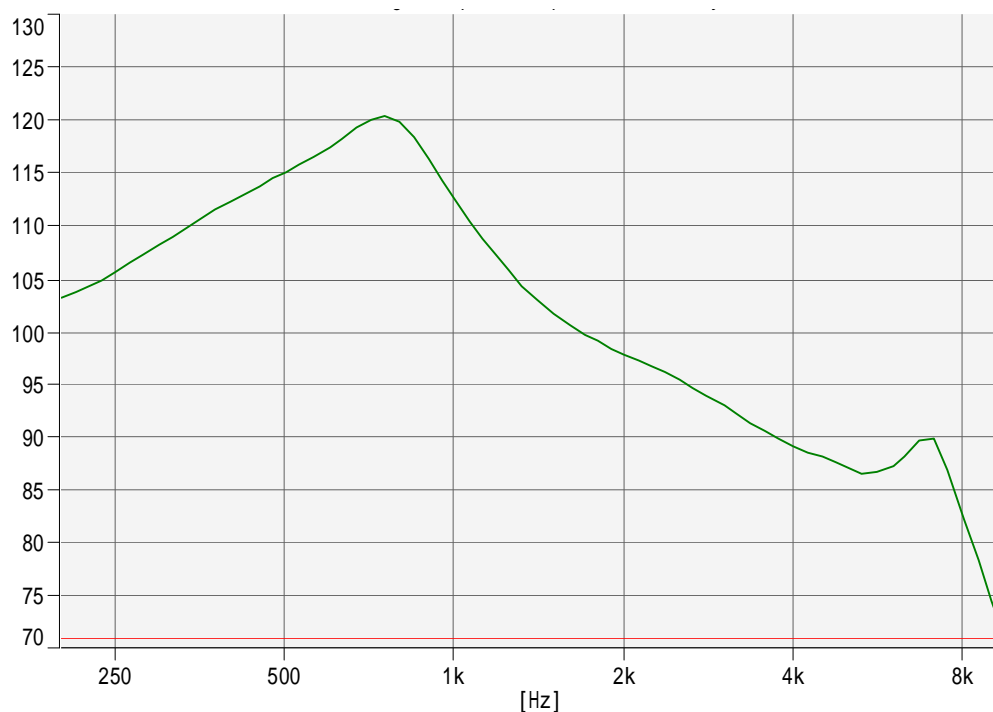
No	Items	Specification
1	Impedance	32 Ω ± 15% (1Vrms at 1KHz)
2	Sound Pressure Level	112 dB ± 3dB (179mV at 1kHz)
3	Resonance Frequency	
4	Frequency Range	300 ~ 3400 Hz
5	Input Power	Rated 10 mW / Max. 30 mW
6	Distortion	<10% Max. at 2kHz/2Vrms
7	Buss and Rattle	Should not be audible buzzes,rattles when the 0.57V sine wave signal swept at frequency range.
8	Polarity	When supplied plus D.C. voltage to (+) terminal, the cone diaphragm must move to forward.

Specification for Receiver		Page	4/9
Model No. : KP1106RT2		Revision No.	1.0
		Drawing No.	KFC3811
<h3>4. Reliability Test</h3> <p>After test(1~7item), the speaker S.P.L . difference shall be within $\pm 3\text{dB}$, and the appearance not exist any change to be harmful to normal operation (e.g. cracks,rusts,damages and especially distortion).</p>			
No	Items	Specification	
1	High Temperature Test	After being placed in a chamber with $+85\pm 3\text{ }^{\circ}\text{C}$ for 96 hours and then being placed in natural condition for 1 hour, speaker shall be measured.	
2	Low Temperature Test	After being placed in a chamber with $-40\pm 3\text{ }^{\circ}\text{C}$ for 96 hours and then being placed in natural condition for 1 hour, speaker shall be measured.	
3	Humidity Test	After being placed in a chamber with 85 to 90%R.H. at $+40\pm 2\text{ }^{\circ}\text{C}$ for 96 hours and then being placed in natural condition for 1 hour, speaker shall be measured.	
4	Thermal Shock Test	<p>After being placed in a chamber at $+70^{\circ}\text{C}$ for 1 hour, then speaker shall be placed in a chamber at -20°C for 1 hour(1 cycle is the below diagram). After 6 above cycles, speaker shall be measured after being placed in natural condition for 1 hour.</p>  <p>The diagram shows a thermal shock cycle. It starts at $+70^{\circ}\text{C}$ for 1 hour, then drops to -20°C for 1 hour. A green line indicates a 20-second ramp time between the two temperature levels.</p>	
5	Vibration Test	After being applied vibration of amplitude of 1.5mm with 10 to 55Hz band of vibration frequency to each of 3 perpendicular directions for 1 hour, then placed in natural condition for 1 hour, speaker shall be measured.	
6	Drop Test	The receiver when mounted in the jig which weight 85g~100g, shall with stand 10 times random drops from a height of 1.5 meter to a concrete floor faced with 5mm thick hard wood board.and be nothing mechanical damage.	
7	Load test	After being applied loading white noise with input power 10W(17.89Vrms.) for 96 hours, then placed in natural condition for 1 hour, speaker shall be measured.	
8	Insulation test	When they are measured with DC 100V the insulation resistance between v.c. terminal and frame must be more than $1\text{ M}\Omega$	

5. Measurement Block Diagram & Response curve

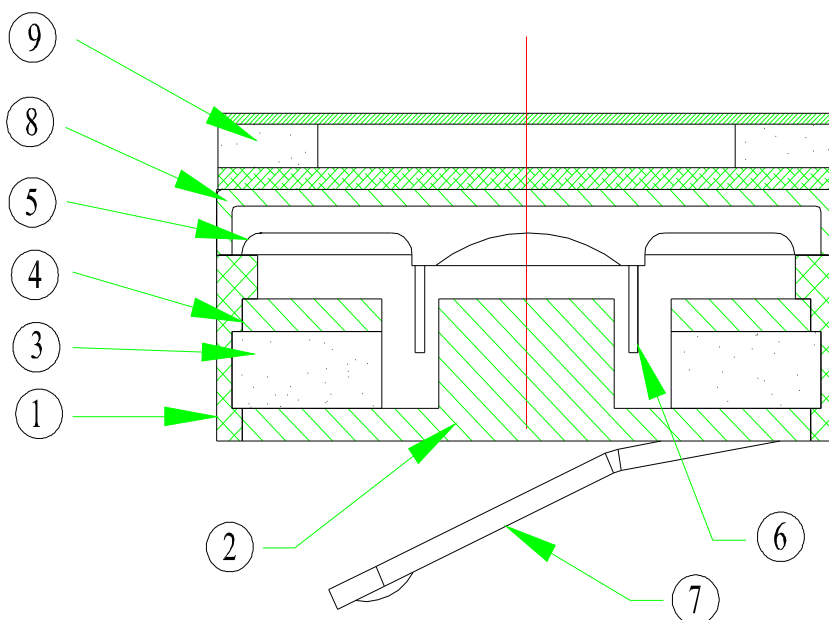


[dB/20.0000u Pa]



Model No. : KP1106RT2	Specification for Receiver	Page	6/9
		Revision No.	1.0
		Drawing No.	KFC3811

6. Structure



9	Gasket	1	unwoven fabirc	
8	Cap	1	SPC	
7	Spring	1	Cu	
6	Voice Coil	1	Cu	
5	Diaphragm	1	PEI	
4	Plate	1	SPC	
3	Magnet	1	Nd-Fe-B	
2	Yoke	1	SPC	
1	Frame	1	PBT	
No.	Part Name	Q'ty	Material	Remarks

Specification for Receiver

Page

7/9

Revision No.

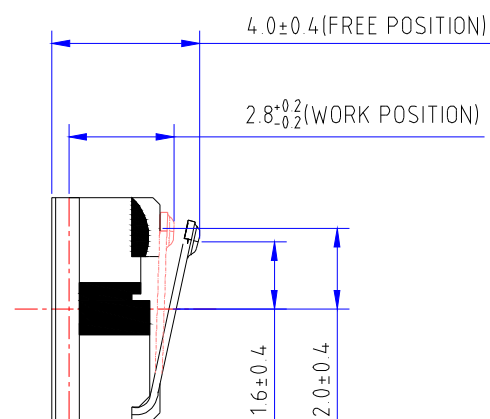
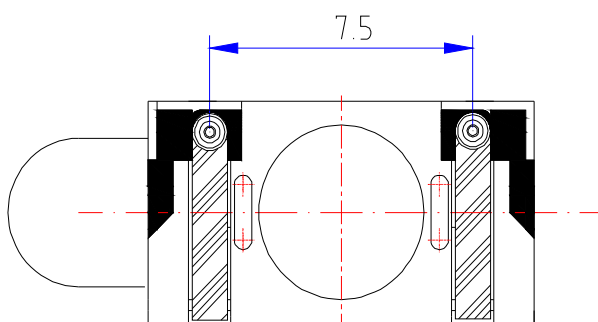
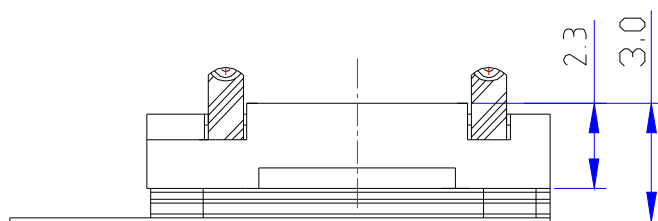
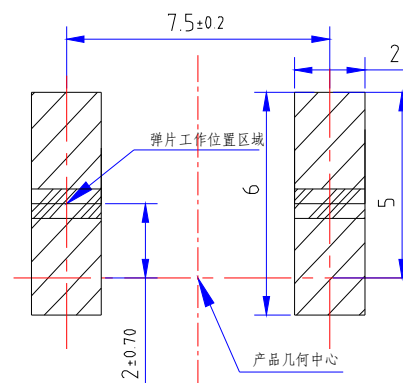
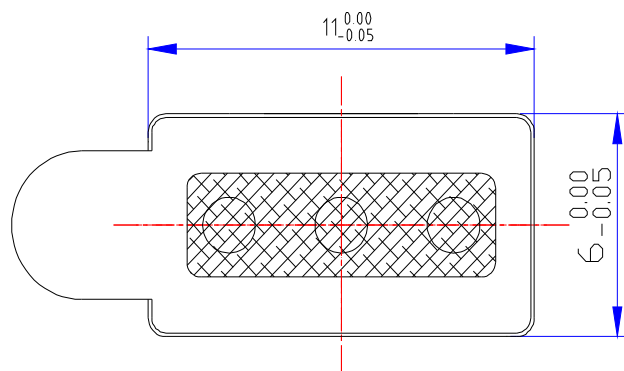
1.0

Model No. : KP1106RT2

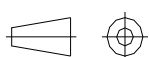
Drawing No.

KFC3811

7. Dimensions



FIRST ANGLE PROJECTION



UNIT : mm

Tolerance : ± 0.2

Specification for Receiver

Page

8/9

Revision No.

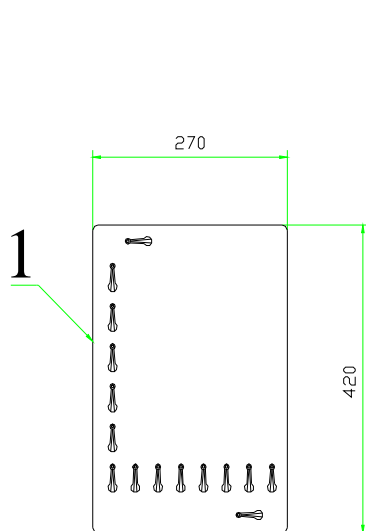
1.0

Model No. : KP1106RT2

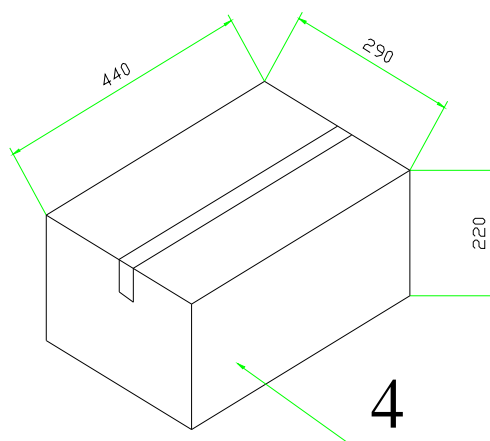
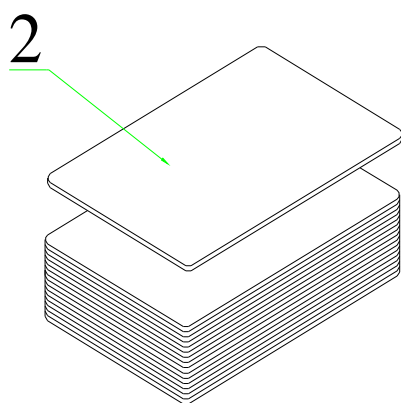
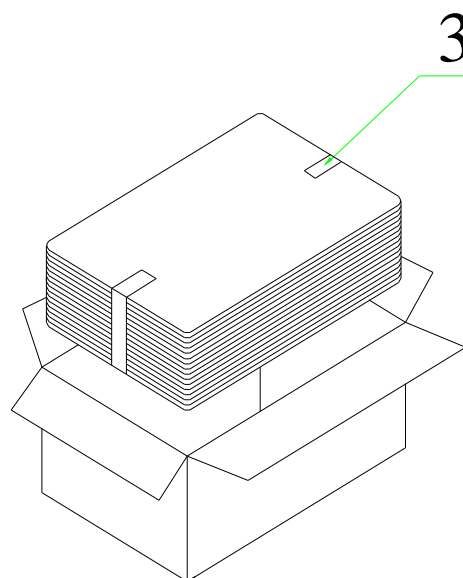
Drawing No.

KFC3811

8. Packing



100Pcs



QTY: 2000Pcs

440 x290 x220

[illegible]