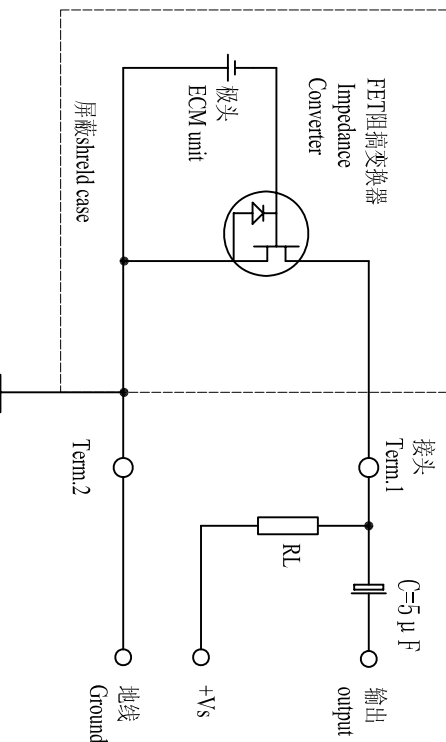


原理图



编号 NO.	项目 Items	规格 Specifications
1	额定电压 Rated Voltage	4.5V
2	工作电压 Operating Voltage	1.5V~10V
3	灵敏度 Sensitivity	-42 ± 2dB at 1KHz(0dB=1V/μ Pa) -62 ± 2dB at 1KHz(0dB=1V/μ bar)
4	消耗电流 Current Consumption	0.5mA Max
5	频率范围 Frequency	100~16,000Hz
6	信噪比 S/N Ratio	≥ 60dB
7	灵敏度减低 Sensitivity Reduction	within-3dB at 1.5V
8	方向性 Directivity	Omnidirectional
9	测试条件 Testing Condition	1000Hz, Vs=4.5V, RL=2.2K Ω
10	壳体材料/颜色 Shell Material/Color	AL/Silver
11	工作温度 Operating Temperature	-25~+55 °C
12	贮存温度 Store Temperature	-25~+55 °C
13	重量 Weight	0.1g

备注 Note:

TOLERANCES UNLESS NOTED OTHERWISE		DRAWN		KEPO MODEL NO.		CUSTOMER	
.X ±	DESIGN			KPCM-60H22-1V4.5		CUSTOMER NO.	
.XX ±	CHECKED			DWG NO.		UNIT	
.XXX ±	APPROVED			KF3,002,015		SCALE	
90° FORMED +2°	DATE	05.11.17		VER		1.0	
ANGLES -1°	CONTRACT NO.			UNIT		mm	
	AGENCY APPROVAL			SHEET			
FIRST ANGLE PROJECTION		KEPO CO., LTD.		TEL: (+86)574-88370330			
		FAX: (+86)574-88370329					

NO.	DATE	REVISION	REFERENCE DWG
1			