

NIS083 SQUARE lenses for Nichia 083 LEDs



- Specially designed for Nichia NS6x083 series of LEDs
- Special care taken to make a uniform white or warm white illumination.
- Lens material optical grade PC with high UV and temperature resistance (130°C/220°F).
- Best available optical efficiency, up to >90%, with an extremely good cutoff of light
- Integrated holder. Fastening to heat sink with a PU foam adhesive tape of automotive grade
- Compact dimensions 21.6 x 21.6 mm. Square form enables easy build of matrix without any gaps between lenses.

LENS TYPES

NAME	ORDERING CODE	FWHM Angle
NIS083 REAL SPOT*	NIS083-RS (n. FA10336)	±3°
NIS083 SMOOTH SPOT*	NIS083-SS (n. FA10337)	±7°
NIS083 DIFFUSER	NIS083-D (n. FA10338)	±6°
NIS083 MEDIUM	NIS083-M (n. FA10339)	±15°
NIS083 WIDE	NIS083-W (n. FA10344)	±33°
NIS083 OVAL	NIS083-O (n. FA10340)	±6° x ±24°

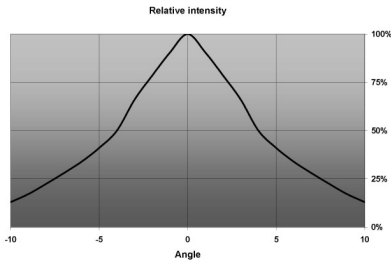
*) IMPORTANT NOTICE:

REAL SPOT lens is a highly efficient pure collimator lens, which optically functions in an excellent way, giving a high intensity. REAL SPOT lens also reveals the chip level optical structure of the LED. We recommend REAL SPOT lens ONLY for applications, where light intensity is of highest priority, while we do not recommend it for applications, where color uniformity and aesthetics are of high importance.

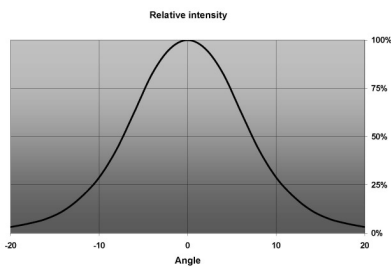
SMOOTH SPOT lens is a pure collimator lens with light mixing properties. It smoothens the beam pattern and makes a uniform color distribution over the whole beam angle. Light intensity is lower than for the REAL SPOT lens. SMOOTH SPOT lens is recommended for white light applications, where pleasant, high-quality illumination is wished.

MEASUREMENTS (using warm white LED)

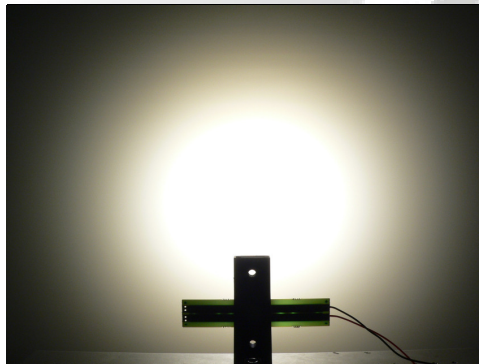
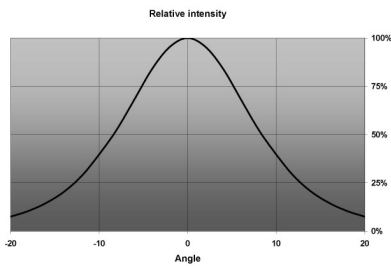
NIS083-RS



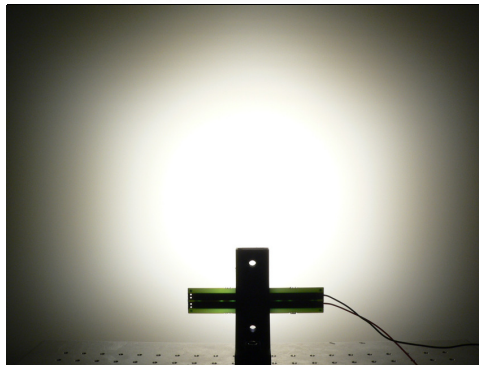
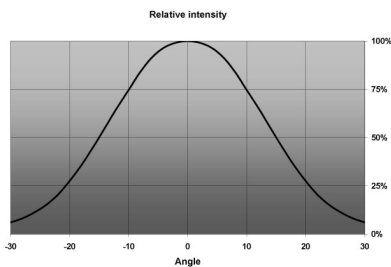
NIS083-SS



NIS083-D

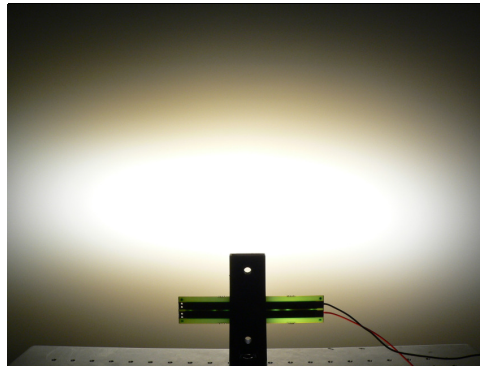
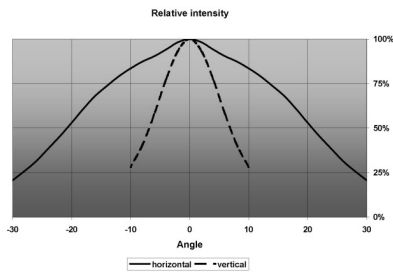


NIS083-M

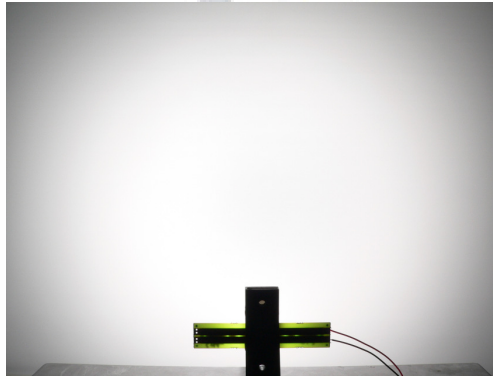
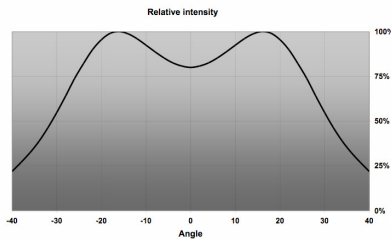


© Ledil Oy – PRELIMINARY - Subject to change without prior notice

NIS083-O



NIS083-W

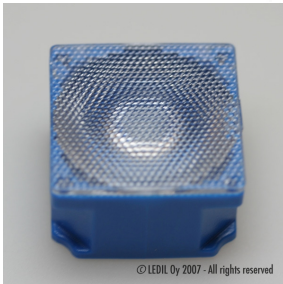


PHOTOS



© LEDIL Oy 2007 - All rights reserved

NIS083-RS

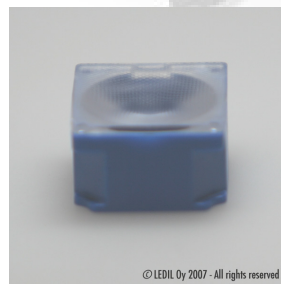


© LEDIL Oy 2007 - All rights reserved

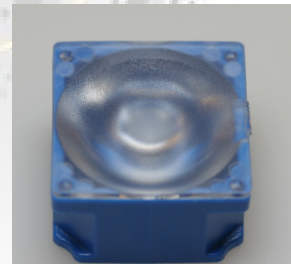


© LEDIL Oy 2007 - All rights reserved

NIS083-SS



© LEDIL Oy 2007 - All rights reserved



© LEDIL Oy 2007 - All rights reserved

NIS083-D



© LEDIL Oy 2007 - All rights reserved

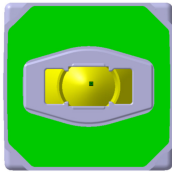
NIS083-M

NIS083-W

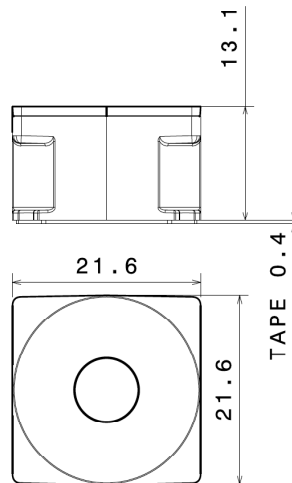
NIS083-O

© Ledil Oy - PRELIMINARY - Subject to change without prior notice

DIMENSIONS



Adhesive tape for quick and secure fastening.



PACKAGING



NIS083 lenses are delivered on adhesive tape liner sheets, each sheet containing 60 lenses.

SPECIAL VERSIONS

Special versions available on request, e.g. different lens holder colors or packaging sizes.