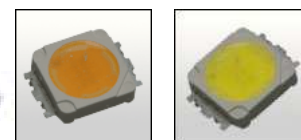


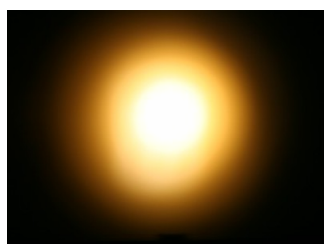
LN2 LENSES FOR NICHIA 083 AND 183 LEDs



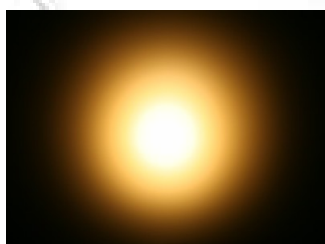
- Specially designed for Nichia NS6x083 & NS6x183 aseries of LEDs
- Special care taken to make a uniform white or warm white illumination. Lenses work well with other colors, too.
- Lens material optical grade PMMA. Allows use of high current and temperature conditions
- Best available optical efficiency, more than 90%, with an extremely good cutoff of light
Fastening to PCB with TAPE

LENS TYPES

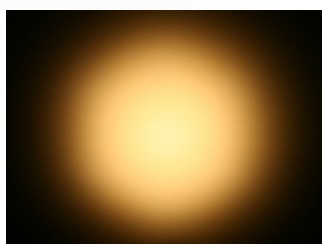
NAME	ORDERING CODE	FWHM Angle
LN2 REAL SPOT	FA10696_LN2-RS	±5.5°
LN2 DIFFUSER	FA10695_LN2-D	±7.7°
LN2 MEDIUM	FA10697_LN2-M	±13°
LN2 RECTANGULAR	FA10698_LN2-REC	±19° x ±11.5°



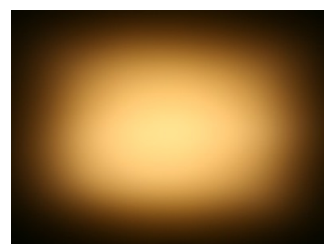
LN2 RS



LN2-D



LN2-M

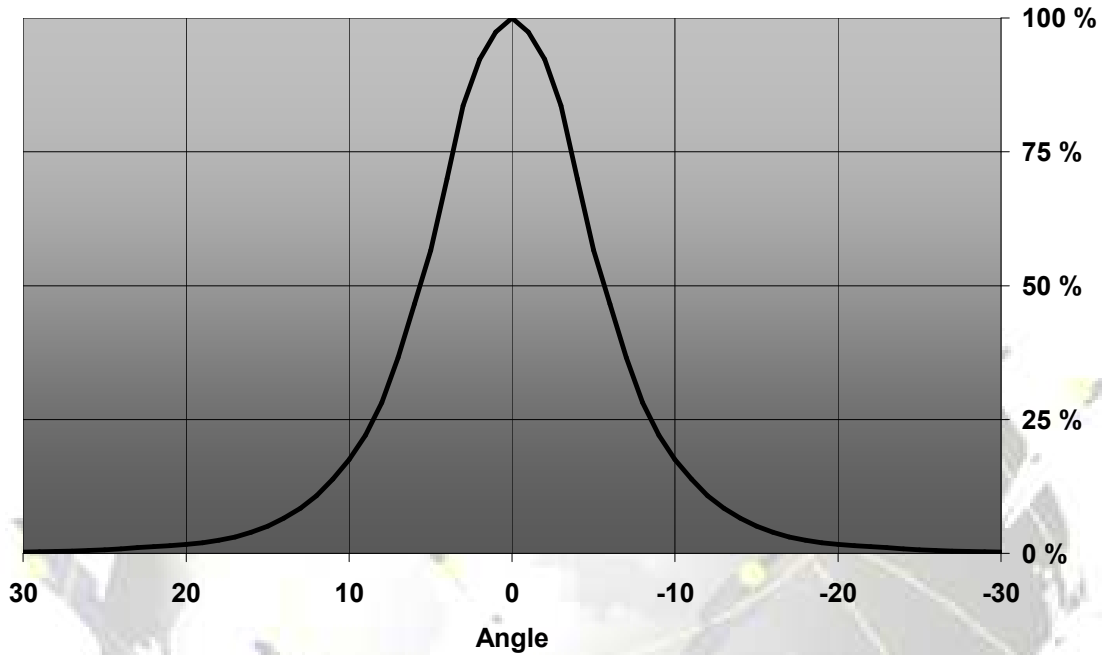


LN2-REC

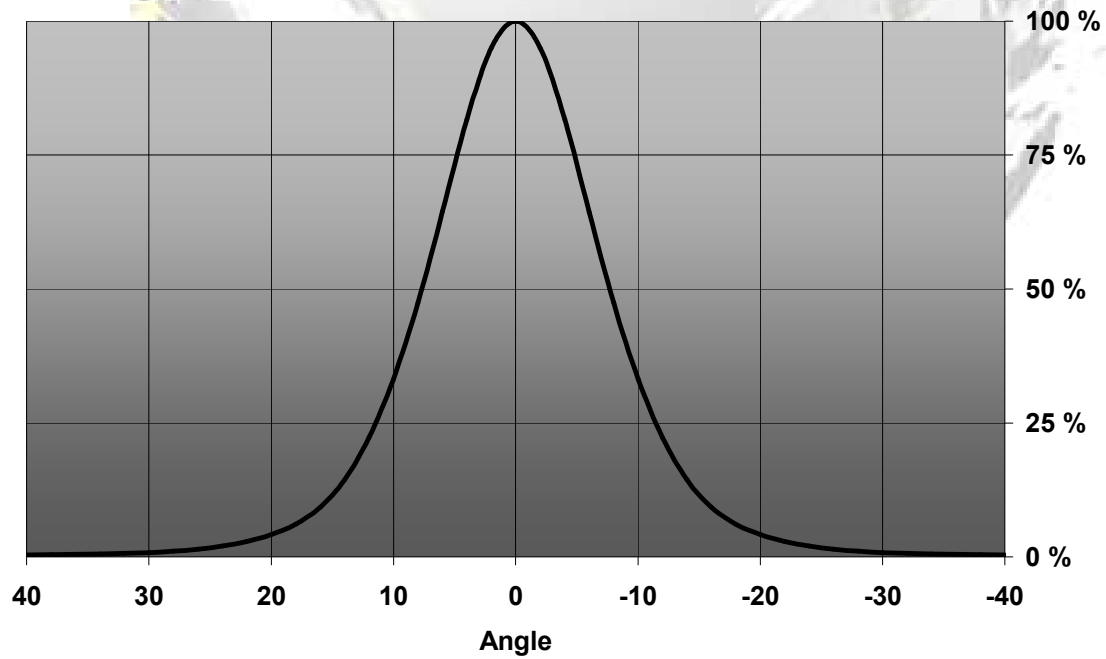
© Ledil Oy - PRELIMINARY - Subject to change without prior notice

MEASUREMENT DATA

Relative Intensity of LN2-RS

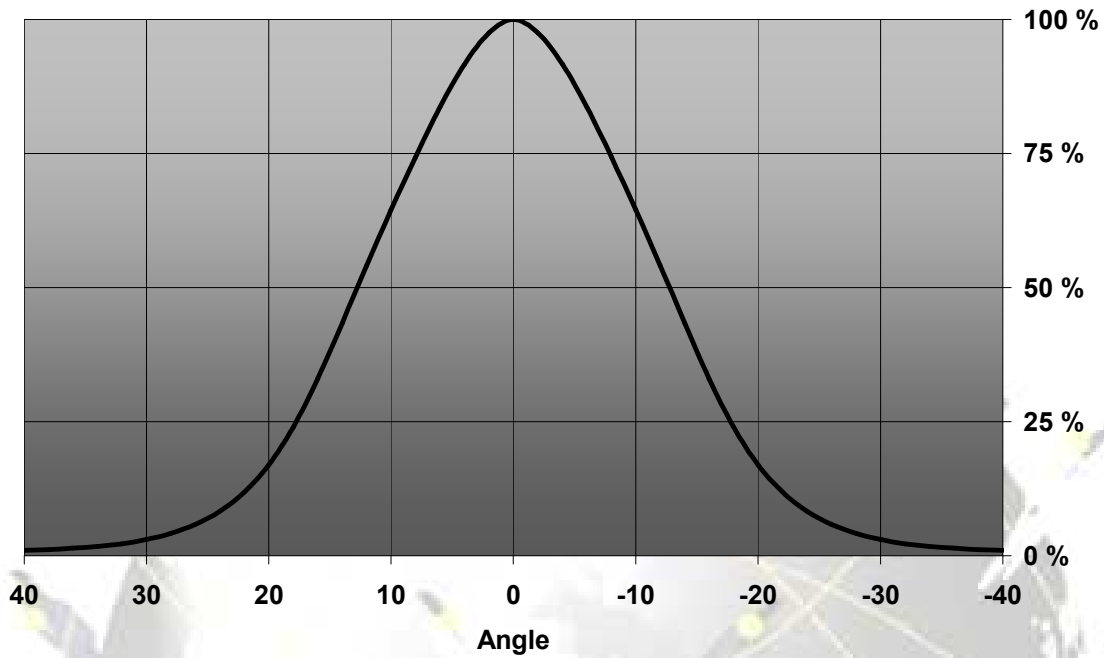


Relative Intensity of LN2-D

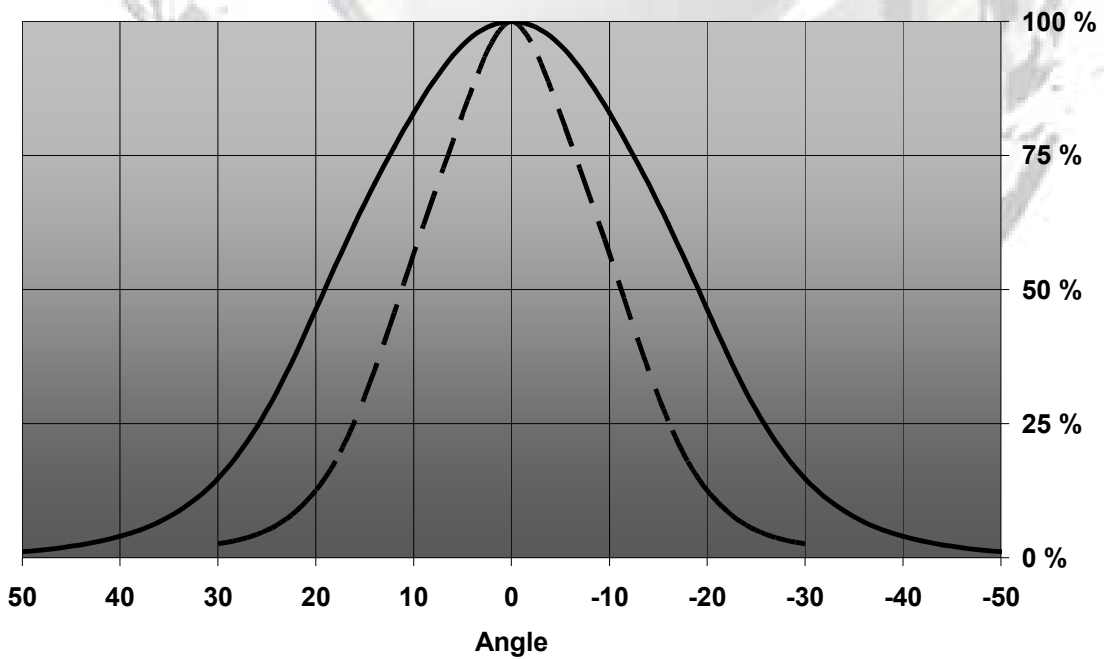


© Ledil Oy – PRELIMINARY - Subject to change without prior notice

Relative Intensity of FA10697_LN2-M

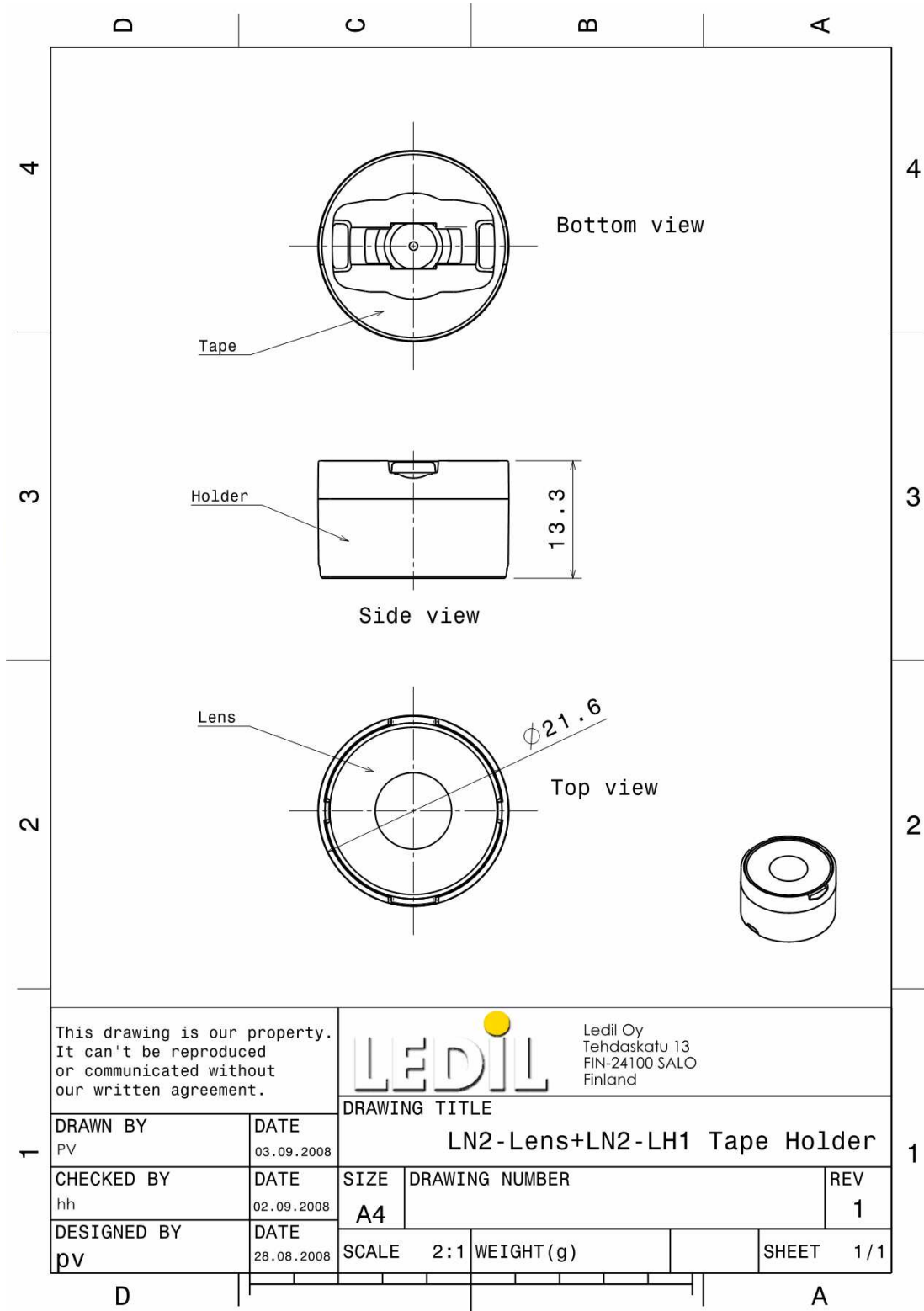


Relative Intensity of FA10698_LN2-REC



© Ledil Oy – PRELIMINARY - Subject to change without prior notice

DRAWINGS



© Ledil Oy – PRELIMINARY - Subject to change without prior notice